

# DTU-20

## Versatile approach

The MDTU-20 is our base detachable wrecker. Comes complete with a headache rack, a single winch, hydraulic stiff legs and a folding underlift. This unit will allow your traditional highway tractor to serve dual purposes. Don't call a wrecker when a fleet truck goes down, call your own dispatch and have them pin up to your Metro Detachable Unit.



### Standard features

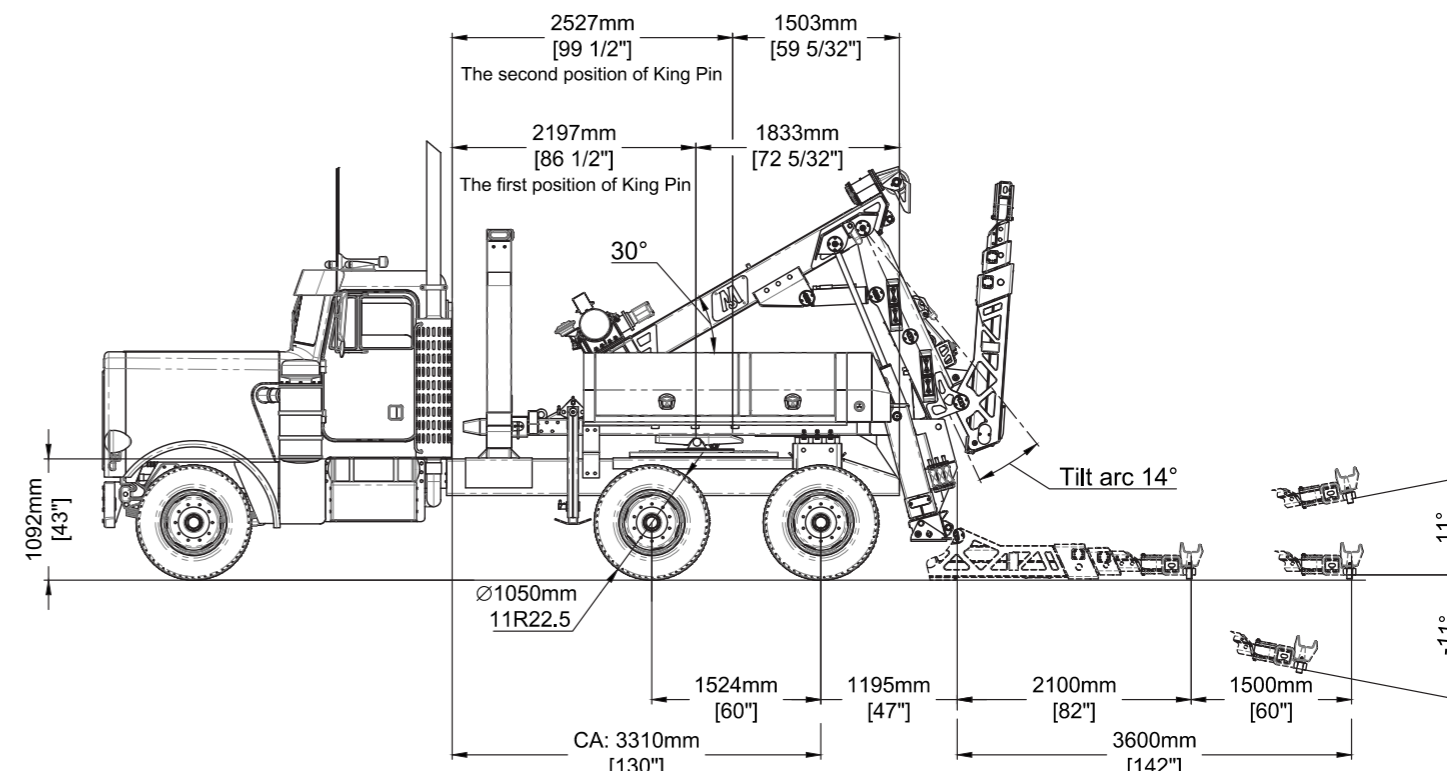
- 10 ton 3-stage underlift
- Single 9 ton (20,000 lbs) hydraulic winch
- Hydraulic stiff legs
- Chain rack and dual toolboxes
- 1 set of Fork Adapters, 4 sets of Frame forks
- Driver and passenger side manual controls
- Set of Safety & Tie-down chains

### Options

- Wireless remote control, non-proportional
- Extra frame forks
- Wheel lift receivers for single / double tires
- Full recovery tool package
- Gravel guard undercoating finish
- Front push bumper
- XP, X-shape side puller
- In cab controls
- Full size LED light bar
- Wiring harness and junction box, Cab switches panel
- Air and Electrical outputs at the tailboard
- LED - working lights, strobe lights, lights inside toolbox
- Custom painting
- Installation services and extended warranty
- Tow operators education & training



Metro DTU-20 mounted on European highway tractor



NOTES:  
All information in this document is for reference purposes only.  
1. Shown 60" Axle configuration  
2. Axle configuration is subject to local laws and regulations. Always check Axle spacing and weight requirements with your local laws  
3. Minimum available distance from the back of the Cab to the rear most axle is 190" (4843 mm)  
The outside frame rails of chassis extending behind the cab must be free of fuel tanks, air tanks, battery boxes, etc.

**Advantages**

- 20 ton (44,000 lbs) actual capacity lets you work with medium duty trucks and light recoveries
- Two rear anchor legs is standard for Metro DTU
- Dual toolboxes is a standard feature
- Convert your highway tractor to a wrecker with DTU

**Notes:**

- Some optional equipment may be shown.
- All ratings are based on structural and design factors only. Vehicle chassis capacity and capabilities can vary significantly, affecting the overall performance and rating of the unit. All chassis specifications are minimums, heavier specifications may be required depending on chassis and equipment weights. Please contact your nearest distributor for additional information.

Metro Tow Trucks Co. reserves the right to change, improve or modify products, which may change the specifications, models and feature availability at any time without notice and without obligation. Please contact your nearest distributor for additional information.

© Metro Tow Trucks. All rights reserved. This material may not be reproduced, displayed, modified or distributed without the express prior written permission of the copyright holder. For permission, contact Sales@MetroTowTrucks.com

**Underlift Specifications**

Retracted capacity on forks	<b>10 ton (22,000 lbs) at 2100 mm (82")</b>
Extended capacity on forks	<b>6 ton (13,200 lbs) at 3600 mm (142")</b>
Negative tilt angle	<b>-11°</b>
Tow Rating	<b>20 ton (44,000 lbs)</b>

**Vehicle Recommendations**

Front axle(s) weight (min)	<b>6 ton (13,200 lbs)</b>
Rear axle(s) weight (min)	<b>2 x 9 ton (2x20,000 lbs)</b>
Recommened GVW (min)	<b>24 ton (53,200 lbs)</b>
Clear CA	<b>130" (3310 mm)</b>

**Boom Specifications**

Retracted capacity (at 30°)	<b>20 ton (44,000 lbs)</b>
Maximum Lift angle	<b>30°</b>

**Winch Specifications**

Quantity	<b>1 pcs</b>
Pulling force (on 1st layer)	<b>9 ton (20,000 lbs)</b>
Winch Type	<b>Worm</b>
Winch line specs	<b>16 mm x 43 m (5/8" x 140')</b>

# DTU-20

